

CATALOG #: _____

Type: _____

PROJECT: _____

FEATURES

- Clear, heat and impact-resistant, tempered glass lens standard
- Fully gasketed for wet locations
- Provides full cutoff
- Stainless steel wireguard and polycarbonate vandal shield options provide added protection
- 1/2" NPS threaded hub and plugged conduit entry points

SPECIFICATIONS

- HOUSING** – Heavy-duty die-cast aluminum construction.
- LENS** – Heat and impact-resistant clear tempered glass standard.
- FINISH** – Powder coated on heavy-duty die-cast housing. Dark bronze finish only.
- ELECTRICAL** – Electronic 120-277V dimmable driver. Metal core PCB LED array.
- MOUNTING** – Wall mounts directly over a 4" maximum recessed outlet box or accepts 1/2" surface conduit.
- LISTINGS** –
 - cCSAus listed to STD22.2 No. 250.0 certified as luminaire suitable for wet locations. 40°C maximum ambient operating temperature.
- WARRANTY** – 5-year limited warranty.

ORDERING EXAMPLE: WPTZ - L38/750 - OPTIONS - DIM - UNV

ORDERING INFO

SERIES	LUMENS	CRI	CCT	OPTIONS	DRIVER
WPTZ ^[1]	L38 3,800lm	7 70	50 5000K	SF Single fuse DF Double fuse SP2 2.5kV surge protection PC Factory-installed photocell PVS Polycarbonate vandal shield ^[2] WG Stainless steel wireguard ^[3]	DIM Dimming driver prewired for 0-10V low voltage applications

VOLTAGE

UNV 120-277V

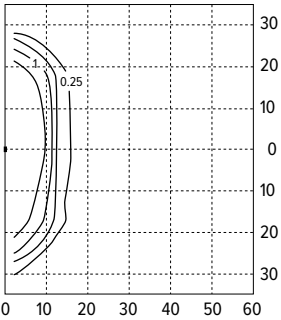
NOTES

- ¹ This fixture does not comply with Buy American/ARRA and similar regulatory programs.
- ² Only one lens-mounted accessory per fixture. See page 2 for ACCESSORIES.

- ³ Only one lens-mounted accessory per fixture. See page 2 for ACCESSORIES.

WPTZ^{LED} Medium Trapezoid Wall Pack

FOOTCANDLE ESTIMATOR & DISTRIBUTION



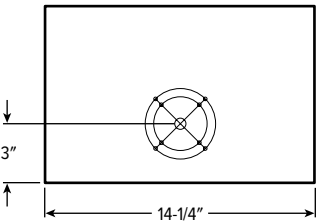
Footcandle calculations based on standard building reflectance of .10 with a ground reflectance of .0 and a light loss factor of .90.

Fixture installed at 12' mounting height.

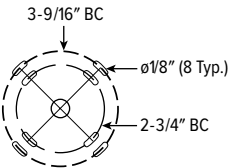
- Wattage: 42
- Efficacy: 90 lm/w
- Flux: 3832 lm
- CRI: 72
- CCT: 5033
- BUG Ratings: B2-U1-G1

MOUNTING DETAILS

BACKVIEW

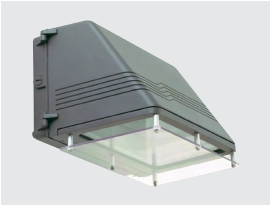


WALL MOUNT BOLT CIRCLE PATTERN



ACCESSORIES

PVS



WG

