

## ASD® LED Wallpack with lenses Installation Instruction

ASD new generation of traditional wallpack with optic lenses is the premier choice for commercial and industrial lighting in a variety of settings, such as entryways, parking lots, garages, warehouses, barns, sheds, public areas, landscape and more.

Our new wallpack with multiple distribution lenses compliance to Dark Sky requirement. You don't need to install additional shields! IP65 rated to stand up to the elements without the risk of damage, shock, or fire.

### FEATURES AND BENEFITS:

- Replaces up to 400 Watt Metal Halide
- Optic glass Lens
- No maintenance
- Operating temperature of -40°F to 104°F
- Wet location IP65
- L-70 Life > 180,000 hrs
- cULus certified
- DesignLights Consortium (DLC) listed (Classification: Standard) / (Classification: Premium)
- 5 Year warranty



### ORDERING MATRIX:

| Family       | Modification                       | Watts       | Dimmable 0~10 V / N | CCT     | Finish | Series           |
|--------------|------------------------------------|-------------|---------------------|---------|--------|------------------|
| ASD-WLP      | XXX                                | XX          | X                   | 40      | B      | XXX              |
| LED Wallpack | 01L = optic lenses                 | 28 = 28 W   | N = Non-dimmable    | 4,000 K | Bronze | PRM = Premium    |
|              | 01LS = optic lenses and small body | 48 = 48 W   | D = Dimmable        |         |        | Blank = Standard |
|              |                                    | 50 = 50 W   |                     |         |        |                  |
|              |                                    | 75 = 75 W   |                     |         |        |                  |
|              |                                    | 120 = 120 W |                     |         |        |                  |

### LED WALLPACK WITH LENSES:

| Model                  | Watts | Dimming Compatible | CCT     | Lumens    | Dimensions (LxWxH)        | DLC      |
|------------------------|-------|--------------------|---------|-----------|---------------------------|----------|
| ASD-WLP01L-28N40B-PRM  | 28    | No                 | 4,000 K | 3,398 lm  | 10" x 5 3/4" x 5 1/2"     | Premium  |
| ASD-WLP01LS-50N40B     | 50    | No                 | 4,000 K | 5,594 lm  | 10" x 5 3/4" x 5 1/2"     | Standard |
| ASD-WLP01L-48N40B-PRM  | 48    | No                 | 4,000 K | 6,478 lm  | 14 1/4" x 9 1/4" x 7 3/8" | Premium  |
| ASD-WLP01L-75D40B-PRM  | 75    | Yes                | 4,000 K | 9,801 lm  | 14 1/4" x 9 1/4" x 7 3/8" | Premium  |
| ASD-WLP01L-120D40B-PRM | 120   | Yes                | 4,000 K | 14,734 lm | 18 1/2" x 9" x 8 1/2"     | Premium  |

E-mail: [orders@asd-lighting.com](mailto:orders@asd-lighting.com)  
WebSite: [www.asd-lighting.com](http://www.asd-lighting.com)

Phone: 781-739-3977  
Fax: 339-502-8970



## ASD® LED Wallpack with lenses Installation Instruction

### PRODUCT SPECIFICATIONS:

| Construction & Materials              |                                  |                   |                        |                   |  |
|---------------------------------------|----------------------------------|-------------------|------------------------|-------------------|--|
| Lens                                  | Glass                            |                   |                        |                   |  |
| Reflector                             | Aluminum                         |                   |                        |                   |  |
| Housing                               | Aluminum                         |                   |                        |                   |  |
| Finish                                | Bronze                           |                   |                        |                   |  |
| Weight                                | ASD-WLP01L-28N40B-PRM            | 3.96 lbs (1.8 kg) | ASD-WLP01L-75D40B-PRM  | 7.48 lbs (3.4 kg) |  |
|                                       | ASD-WLP01LS-50N40B               |                   | ASD-WLP01L-120D40B-PRM | 13.2 lbs (6.0 kg) |  |
|                                       | ASD-WLP01L-48N40B-PRM            | 7.48 lbs (3.4 kg) |                        |                   |  |
| Environmental System                  |                                  |                   |                        |                   |  |
| Work Environment                      | Suitable for Wet Locations, IP65 |                   |                        |                   |  |
| Operating Temperature                 | -40°F to 104°F (-40°C to 40°C)   |                   |                        |                   |  |
| L-70 Life                             | > 180,000 hrs                    |                   |                        |                   |  |
| Optical System                        |                                  |                   |                        |                   |  |
| Luminous Flux                         | ASD-WLP01L-28N40B-PRM            | 3,398 lm          | ASD-WLP01L-75D40B-PRM  | 9,801 lm          |  |
|                                       | ASD-WLP01LS-50N40B               | 5,594 lm          | ASD-WLP01L-120D40B-PRM | 14,734 lm         |  |
|                                       | ASD-WLP01L-48N40B-PRM            | 6,478 lm          |                        |                   |  |
| Color Temperature                     | 4,000 K                          |                   |                        |                   |  |
| CRI                                   | >70                              |                   |                        |                   |  |
| Electrical System                     |                                  |                   |                        |                   |  |
| Input Voltage                         | 100-277V AC 50/60 Hz             |                   |                        |                   |  |
| Max input current                     | ASD-WLP01L-28N40B-PRM            | 0.38 A            | ASD-WLP01L-75D40B-PRM  | 1.0 A             |  |
|                                       | ASD-WLP01LS-50N40B               | 0.52 A            | ASD-WLP01L-120D40B-PRM | 1.5 A             |  |
|                                       | ASD-WLP01L-48N40B-PRM            |                   |                        |                   |  |
| Inrush current                        | ASD-WLP01L-28N40B-PRM            | 20 A              | ASD-WLP01L-75D40B-PRM  | 30 A              |  |
|                                       | ASD-WLP01LS-50N40B               |                   | ASD-WLP01L-120D40B-PRM |                   |  |
|                                       | ASD-WLP01L-48N40B-PRM            |                   |                        |                   |  |
| Action time (Inrush current)          | 600 ms                           |                   |                        |                   |  |
| AC input range                        | min 90 V max 305 V               |                   |                        |                   |  |
| Off State Power                       | 0 W                              |                   |                        |                   |  |
| Power Consumption                     | ASD-WLP01L-28N40B-PRM            | 28 W              | ASD-WLP01L-75D40B-PRM  | 75 W              |  |
|                                       | ASD-WLP01LS-50N40B               | 50 W              | ASD-WLP01L-120D40B-PRM | 120 W             |  |
|                                       | ASD-WLP01L-48N40B-PRM            | 48 W              |                        |                   |  |
| Power Factor                          | > 0.9                            |                   |                        |                   |  |
| Output voltage                        | ASD-WLP01L-28N40B-PRM            | 24-45 V           | ASD-WLP01L-75D40B-PRM  | 28-40 V           |  |
|                                       | ASD-WLP01LS-50N40B               | 23-42 V           | ASD-WLP01L-120D40B-PRM | 40 V              |  |
|                                       | ASD-WLP01L-48N40B-PRM            |                   |                        |                   |  |
| Max output current                    | ASD-WLP01L-28N40B-PRM            | 700 mA            | ASD-WLP01L-75D40B-PRM  | 2000 mA           |  |
|                                       | ASD-WLP01LS-50N40B               | 1200 mA           | ASD-WLP01L-120D40B-PRM | 2100-3000 mA      |  |
|                                       | ASD-WLP01L-48N40B-PRM            |                   |                        |                   |  |
| LED Driver Class                      | ASD-WLP01L-28N40B-PRM            | Class 2           | ASD-WLP01L-75D40B-PRM  | No                |  |
|                                       | ASD-WLP01LS-50N40B               |                   | ASD-WLP01L-120D40B-PRM |                   |  |
|                                       | ASD-WLP01L-48N40B-PRM            |                   |                        |                   |  |
| Warranty & Certifications             |                                  |                   |                        |                   |  |
| 5-year limited warranty               |                                  |                   |                        |                   |  |
| DesignLights™ Consortium (DLC) listed |                                  |                   |                        |                   |  |
| cULus certified                       | E473804                          |                   |                        |                   |  |

The LED Wallpack is designed to install as a surface mounted luminaire.

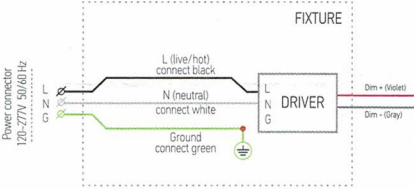
The LED Wallpack is designed to install as a surface mounted luminaire.

## ASD® LED Wallpack with lenses Installation Instruction

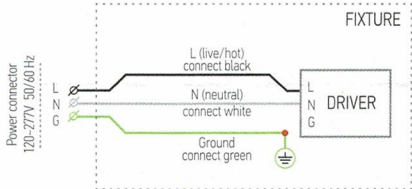
### PACKAGE CONTENTS:

| Description                      | Q-ty |
|----------------------------------|------|
| LED Wallpack with lenses fixture | 1    |
| Box                              | 1    |
| Installation Instructions        | 1    |

### ELECTRICAL SCHEMATIC DIAGRAM DIMMABLE



### ELECTRICAL SCHEMATIC DIAGRAM NON-DIMMABLE



### ⚠ WARNING

**RISK OF PERSONAL INJURY – READ and follow all WARNINGS and installation instructions.** Keep or give to the owner for future reference.

**Risk of cuts:** Wear gloves to prevent cuts or abrasions when removing from carton, handling, installing, and maintaining this product.

**Risk of electric shock:** This product must be installed in accordance with the applicable installation code by a person familiar with the construction and operation of the product and the hazards involved.

**Risk of Fire:** Minimum 90°C supply conductors. Consult a qualified electrician to ensure correct branch circuit conductor.

ASD® assumes no responsibility for claims arising out of improper or careless Installation or handling of this product.

E-mail: [orders@asd-lighting.com](mailto:orders@asd-lighting.com)  
WebSite: [www.asd-lighting.com](http://www.asd-lighting.com)

Phone: 781-739-3977  
Fax: 339-502-8970



## ASD® LED Wallpack with lenses Installation Instruction

### INSTALLATION GUIDE

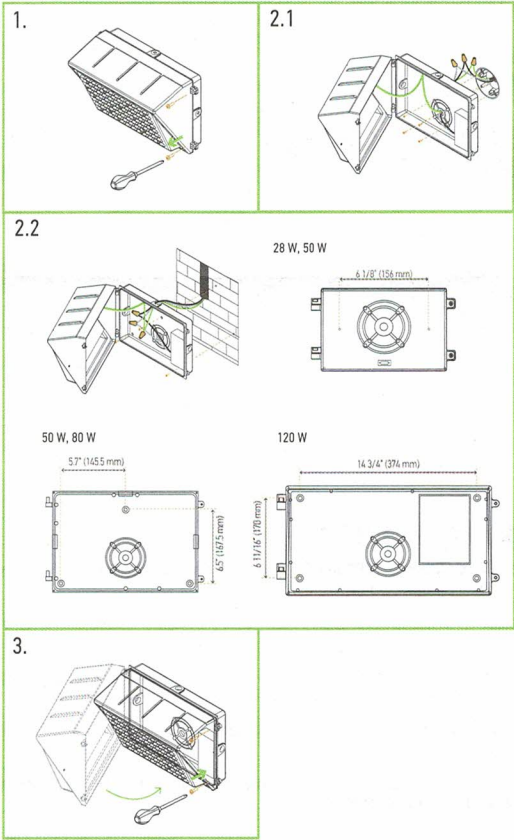
#### IMPORTANT SAFETY INFORMATION:

Please read all the instructions below before installation.

- Make sure that the supply voltage corresponds to the rated product voltage.
- The product must be installed by a qualified electrician in accordance with the National Electrical Code and corresponding local codes.
- If the product is damaged, do not use it.

#### INSTALLATION STEPS

1. Use a screwdriver to loosen (2) screws securing fixture door and open it.
2. Can be mounted to a junction box (see 2.1) or directly to a wall (see 2.2).
- 2.1 Carefully drill holes through castings to avoid damaging the driver, wires and quick connectors. Hang the fixture on the back plate. Connect wires into wiring terminal; white wire to "Neutral" terminal, black wire to "Live" terminal, green wire to "Ground" terminal; and fix them with screws.
- 2.2 Replace one of the side caps pointed in the picture, insert power cord into the fixture and connect the wires as shown. Refer to size of the diagram to bore the holes in the wall.
3. Close fixture and tighten 2 screws removed in installation step 1.



E-mail: [orders@asd-lighting.com](mailto:orders@asd-lighting.com)  
WebSite: [www.asd-lighting.com](http://www.asd-lighting.com)

Phone: 781-739-3977  
Fax: 339-502-8970



E-mail: [orders@asd-lighting.com](mailto:orders@asd-lighting.com)  
WebSite: [www.asd-lighting.com](http://www.asd-lighting.com)

Phone: 781-739-3977  
Fax: 339-502-8970

