

Baseline Assessment & Project Initiation
Memorandum
Climate Change Water Resources Vulnerability and
Adaptation Strategy Assessment

Town of Carver
Carver, MA

December 2018



Table of Contents

Baseline Assessment & Project Initiation Memorandum Town of Carver

1	Baseline Assessment.....	2
2	Mapping.....	3
2.1	Map 1A – Existing Water Resources.....	3
2.2	Map 1B – Flooding.....	3
2.3	Map 2 – Existing Natural Resources.....	3
2.4	Map 3A/3B – Firefighting Water Supplies.....	4
2.5	Map 4 – Cranberry Growing Water Supplies.....	4
3	Dam Database	4

Appendices

End of Report

- A – Project Initiation Meeting Roster and Notes
- B – Maps and Companion Documentation
- C – ODS Database Information for Carver

1 Baseline Assessment

The first task in the Climate Change Water Resources Vulnerability and Adaptation Strategy Assessment focused on the identification and acquisition of key information sources for the baseline assessment of water resources and related natural resources and the built environment. Fuss & O'Neill coordinated with the Town of Carver to gather potential relevant information for the development of a series of maps that formed the core of the Baseline Assessment and were critical for the initiation of the Fire Department Water Supply Source Assessment (Task 2) and Agricultural Water Sources Assessment (Task 3). This information was gathered, reviewed, and summarized in a series of maps prior to the project initiation meeting (see meeting notes and attendance roster in *Appendix A*) and was used to frame the discussion of resource assessment.

The maps developed for the Baseline Assessment catalog current water infrastructure and water resource conditions in Carver. The following sections of this memorandum provide a brief description of each map and information on the sources used to compile the maps. This Baseline Assessment, combined with the technical evaluations in other tasks of the Climate Change Water Resources Vulnerability and Adaptation Strategy Assessment, will inform the management plan recommendations and serve as a background reference documentation to support future implementation activities within the Town.

The following sources of information were sought and, when available, reviewed as the basis for documenting existing conditions:

- Cranberry Bog Locations – Massachusetts Department of Environmental Protection & The Cape Cod Cranberry Growers' Association
- Carver Fire Department Resources and Facilities Map - Carver Fire Department (2009)
- Plymouth/Carver Sole Source Aquifer Management Plan (2009)
- On Site Wastewater Systems - GIS data - (Carver Department of Health)
- Town-wide Land Use/Land Cover
- Water Quality Sampling Data For Cyanobacteria (Massachusetts Department of Health)
- MassGIS hydrography, and water quality classification, and surficial materials classification mapping
- FEMA Flood Insurance Studies and hydrologic/hydraulic model information
- Massachusetts State Hazard Mitigation and Climate Adaptation Plan
- Town of Carver Hazard Mitigation Plan (2015)
- Town of Carver Open Space and Recreation Plan
- Town of Carver Master Plan
- Massachusetts Climate Change Clearinghouse
- Massachusetts Climate Change Adaptation Report
- Hydrogeology and Simulation of Groundwater Flow in the Plymouth-Carver-Kingston-Duxbury Aquifer System, Southeastern Massachusetts (USGS SIR 2009-5063)
- Wildfire Hazard Potential (WHP) map developed by the U.S. Forest Service's (USFS) Fire Modeling Institute (2014)

2 Mapping

A series of six maps illustrating baseline conditions within the Town of Carver were created utilizing Esri's ArcGIS Pro, a 2D and 3D mapping software. The maps were developed from a variety of state and federal data sources, as well as information directly obtained from the Carver Fire Department and discussions with the Core Team. These maps can be found in *Appendix B*, along with a dam reference table and a data source summary table.

2.1 Map 1A – Existing Water Resources

Map 1A depicts the current existing water resources within the Town of Carver. Geospatial data displayed on this map includes: Town Boundaries, Massachusetts Department of Transportation (MassDOT) Major Roads, Massachusetts Department of Environmental Protection (MassDEP) Wellhead Protection Areas, MassDEP 2014 Integrated List of Waters, MassDEP Hydrography, and localized Aquifers. All of the aforementioned data is available online through the MassGIS database (<https://www.mass.gov/service-details/massgis-data-layers>). Additionally, a Water Management Act (WMA) Cranberry bog data layer is shown in the map. This data layer was obtained by request to Jim McLaughlin (James.M.McLaughlin@mass.gov) at the MassDEP Southeast Region office. The map, as well as a table summarizing the data's name, source, date, and location, can be found in *Appendix B*.

2.2 Map 1B – Flooding

Map 1B depicts the areas within the Town of Carver that may be susceptible to flooding. Geospatial data displayed on this map includes: Town Boundaries, MassDOT Major Roads, MassDEP Hydrography, and FEMA National Flood Hazard Zones. All of the aforementioned data is available online through the MassGIS database. Additionally, a WMA Cranberry bog data layer is shown in the map. This data layer was obtained by request to Jim McLaughlin at MassDEP. The map as well as a table summarizing the data's name, source, date, and location can be found in *Appendix B*.

2.3 Map 2 – Existing Natural Resources

Map 2 depicts the current existing natural resources within the Town of Carver. Geospatial data displayed on this map includes: Town Boundaries, MassDOT Major Roads, Massachusetts Natural Heritage and Endangered Species Program (NHESP) Estimated Habitats of Rare Wildlife, NHESP Priority Habitats of Rare Species, NHESP Natural Communities, NHESP Certified Vernal Pools, NHESP BioMap2, and Protected and Recreational Open Space. All of the aforementioned data is available online through the MassGIS database. The map as well as a table summarizing the data's name, source, date, and location can be found in *Appendix B*.

2.4 Map 3A/3B – Firefighting Water Supplies

Map 3A depicts the current firefighting water supplies within the Town of Carver. Geospatial data displayed on this map includes: Town Boundaries, MassDOT Major Roads, Dams, MassDEP Hydrography. All of the aforementioned data is available online through the MassGIS database. Additionally, Aerial imagery obtained through Esri's online server, Wildfire Hazard Potential from the U.S. Forest Service, and Fire Department Water Supplies digitized from physical maps from the Town of Carver's Fire Department are included in this map. The only difference between maps 3A and 3B is the distinctions of priority firefighting water supplies as identified by the Fire Department's Fire Chief, Craig Weston. The maps, an expanded dam reference table, and a table summarizing the data's name, source, date, and location can be found in *Appendix B*.

2.5 Map 4 – Cranberry Growing Water Supplies

Map 4 depicts the current cranberry growing water supplies within the Town of Carver. Geospatial data displayed on this map includes" Town Boundaries, MassDOT Major Roads, Dams, and MassDEP Hydrography. All of the aforementioned data is available online through the MassGIS database. Additionally, Aerial imagery obtained through Esri's online server and a WMA cranberry bog data layer are included in this map. The cranberry bog layer was obtained by request to Jim McLaughlin at MassDEP. The map, an expanded dam reference table, and a table summarizing the data's name, source, date, and location can be found in *Appendix B*.

3 Dam Database

The Massachusetts Office of Dam Safety (ODS) within the Department of Conservation and Recreation (DCR) maintains a dam safety database that includes detailed information about each dam for operational purposes. This information includes the location, ownership, regulation authority (i.e., is it regulated by the Office of Dam Safety under CMR 302 10.00), and the hazard classification of the dam if it is regulated.

The list of dams in Carver is shown in *Appendix C*. The query of the ODS database shows that 4 dams within Carver are owned by the Town, with all others being privately owned. Ten dams are regulated by ODS under CMR 302 10.00 (four (4) significant hazard dams and six (6) low hazard dams), including two (2) owned by the Town of Carver. The significant hazard dams are:

- Tremont Street Dam
- Crane Brook Upper Dam
- Mayflower Road Dam
- Plymouth Road Dam.

Appendix A – Project Initiation Meeting Roster and Notes



MEETING NOTES

OCTOBER 17, 2018

PROJECT NUMBER: 20170390.B51
PROJECT NAME: MVP Action Grant FY18 – Carver

ATTENDEES:	<u>Name</u>	<u>Affiliation</u>
	Stephen Cole	Town of Carver
	Brian Wick	Cape Cod Cranberry Growers
	Shawn King	Fuss & O'Neill
	Phil Moreschi	Fuss & O'Neill
	Diane Mas	Fuss & O'Neill
	Brooke Monroe	Town of Carver
	Tom Walsh	Carver Chief of EMS
	John Woods	Carver Operations & Maintenance

RE: MVP Action Grant Project Initiation Meeting
SUBMITTED BY: Shawn King

Introductions

Overview of Project

- Water availability
- Effects on cranberry growing
- Grant received (~\$200K) – 1 year timeframe
- Location of firefighting water supplies
- Water supplies in relation to natural resources, etc.
- Goals of meeting
 - Identify a short list
 - 16 water supplies (Fire Dept. supply)
 - 5 water supplies (Cranberry supply)
- Field Work
 - Goal: end of November completion
- Draft Management Plan
 - Goal: spring 2019
- Plan will aid in next round of grants
- Completion of work: June 2019

Maps

- Overview of individual maps
- Lots of water resources
 - Need to narrow down resources to investigate
- Water quality

\\private\dfs\ProjectData\P2017\0390\B51\Meetings\Project Initiation - Town - October 17, 2018\MEETING NOTES_Carver Project Initiation_SAK_20181017.docx



MEETING NOTES
OCTOBER 17, 2018
PROJECT INITIATION MEETING - MVP ACTION GRANT FY18 – CARVER
PAGE 2 OF 4

- Algal blooms an issue at Sampson Pond
 - May restrict water supply due to algal toxins or overgrowth
- Flooding
 - F&O understands flooding in the Carver community; was not an issue this year based on discussions with the Town.
- Natural Resources
 - NHESP area at Sampson
 - Not sure what is present but could be plant around pond or a fish.
- Firefighting Water Supply
 - 3B is priority map based on F.D. Chief information (mostly concerned about availability of water at these locations)
 - Access is a major consideration
- Cranberry Growing Water Supply
 - Relates where the cranberry farms are in relation to dams and other impoundments/water supplies

Cranberry Water Supplies

- Goal is to get growers to allow us on site
 - 5 sites
 - Sites with drought issues (2016, etc.)
 - Various supply types: dams, swamps, etc.
- Brian (Cranberry Growers) confident he can get 5 willing growers
- Brian in contact with a few farm planners and could probably provide distribution of types of supply.
- Town mentions invasives are an issue
 - Japanese Knotweed
 - Foxtail-like plant in the water
 - If this project can address some of this also that would be helpful.
- Peak water demand for bogs
 - Right now used to flood bogs and for sprinklers for frost protection
 - Winter need to flood all bogs
 - Brian has excel sheet of estimated water volume for use; will forward to F&O
- Dry harvesting of cranberries not practical or cost effective in Carver.
- Moving water from one area to another not feasible for most farmers.
- Over time sediment fills in → farmers can't afford dredge
 - Take out economics → dredging might be a good idea
- Conservation Commission
 - Maintenance of existing supply if in the farm plan usually not an issue/doesn't need to be filed.
 - ConCom does want to be notified.
- Majority of growers have a farm plan
- Main issues for growers will be:

\\private\dfs\ProjectData\P2017\0390\B51\Meetings\Project Initiation - Town - October 17, 2018\MEETING NOTES_Carver Project Initiation_SAK_20181017.docx



MEETING NOTES

OCTOBER 17, 2018

PROJECT INITIATION MEETING - MVP ACTION GRANT FY18 – CARVER

PAGE 3 OF 4

- Regulation
 - Economics
- Could do a town-wide survey
 - ID main issues and general questions on supply/issues.
- What is the economic impact from 2016 drought?
- Coordinate with Brian on 5 locations
 - Ideally variety of supply
 - If there are any with issues
 - W.Q./impaired issue
 - Identify those in cnxt couple of weeks
- Nutrient loading (phosphorus) was historically an issue; less so now with required soil testing
- Herbicide, pesticide, insecticides all used
 - There is a required holding time for bogs/supply to prevent further degradation of water quality downstream
 - Currently not issue with downstream impairments
- No incentive to overfertilize with nitrogen since it prevents berry growth
- In past, evidence of overfertilization but has significantly reduced in past 10 years to switch to custom blends of fertilizer.
- Testing of fertilizer is done → required by MA Dept. of Agriculture
- Bogs are registered with DEP
 - For survey, want to ask number or address or owner name to correlate survey results to a location to plot on a map.
- Water use is significantly less due to technology advances (soil probes, auto-irrigation, ...)
- Invasives
 - Another issue is moss overhanging areas
 - Likely due to climate change causing wetter conditions
 - Cranberry UMASS center would have more information on moss effects if necessary
- Well use → not many for bogs
 - Brian: Would need to re-register with DEP due to location
 - Pumps for wells are expensive to run as well
 - Current pumps are emergency/backup usage only

Fire Department Supply Locations

- Areas other departments have concern with
 - Water supply North Carver above Route 44
- Fire Department
 - Would need to be significant fire for bogs use and fire suppression to be an issue
 - Clears out vegetation and snow for access
- Dual purpose areas
 - Areas that may be critical for Fire Department and also bog use

\\private\dfs\ProjectData\P2017\0390\B51\Meetings\Project Initiation - Town - October 17, 2018\MEETING NOTES_Carver Project Initiation_SAK_20181017.docx





MEETING NOTES

OCTOBER 17, 2018

PROJECT INITIATION MEETING - MVP ACTION GRANT FY18 – CARVER

PAGE 4 OF 4

- May be a (smaller) demand for conversion of existing bogs to water supply if there was an economic incentive
- Town Expansion
 - North Carver
 - May want to look in North Carver Fire Department; priority in the north since expansion areas will be susceptible.
- North Carver Water Supply
 - 3 wells
 - One inactive
 - One pulling up manganese, etc.
 - One working as needed
 - Thought about new supply or supplemental – Cold Mill Pond Area
- Overview of What We Are Looking for
 - Geography, sediment, W-Q, algal blooms, dams/infrastructure, capacities and limits on withdrawal, etc.
 - Will sample
- Sediment reuse (dredge)
 - Quality of matrix
 - Would need permit for offsite reuse

Action Items

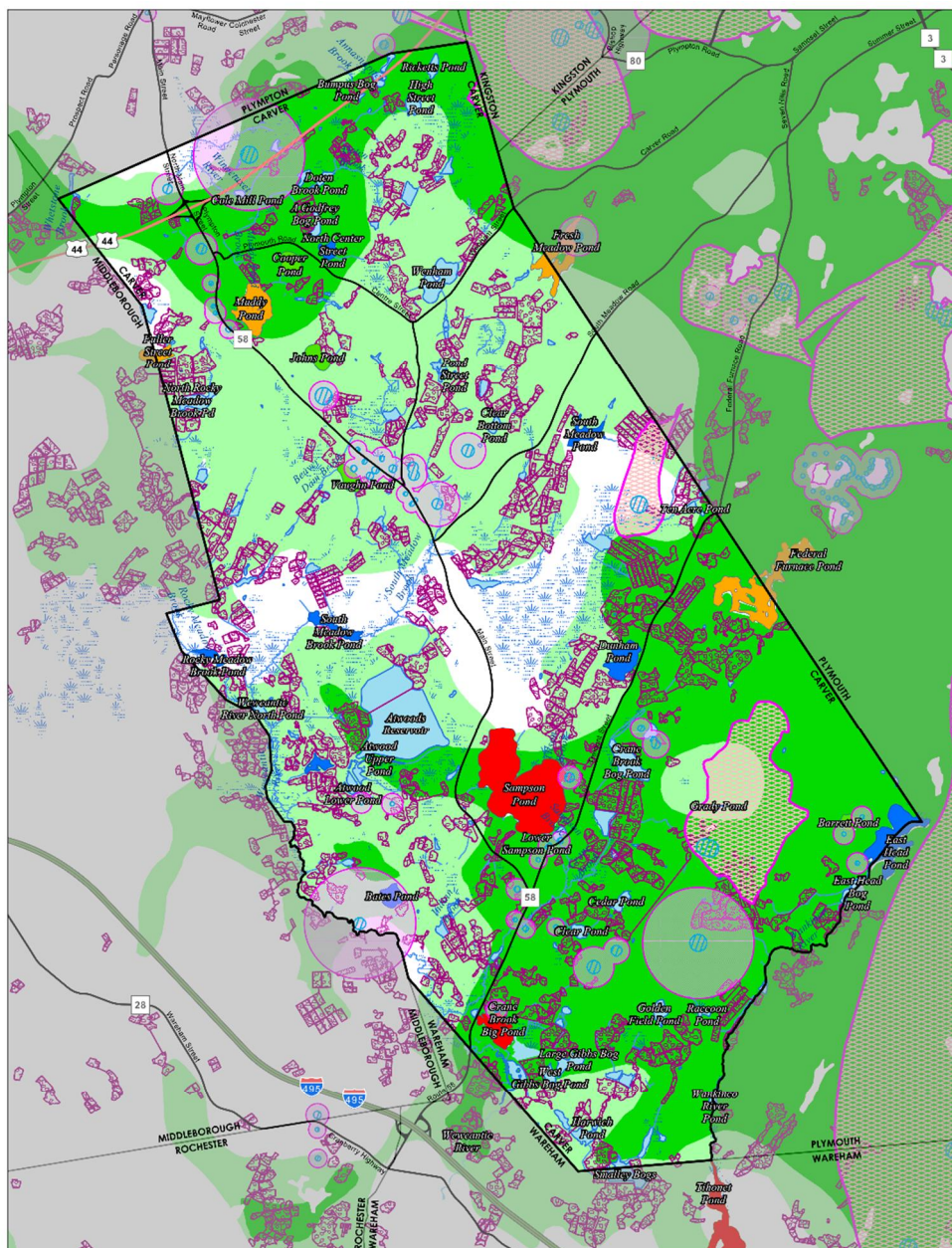
- Follow-up with Brian on water usage and potential locations for field work.
- Follow-up with F.D. Chief on firefighting water supplies for field work.
- Follow-up with map of bogs and fire supply combined on same map.

\\\\private\\dfs\\ProjectData\\P2017\\0390\\B51\\Meetings\\Project Initiation - Town - October 17, 2018\\MEETING NOTES_Carver Project Initiation_SAK_20181017.docx



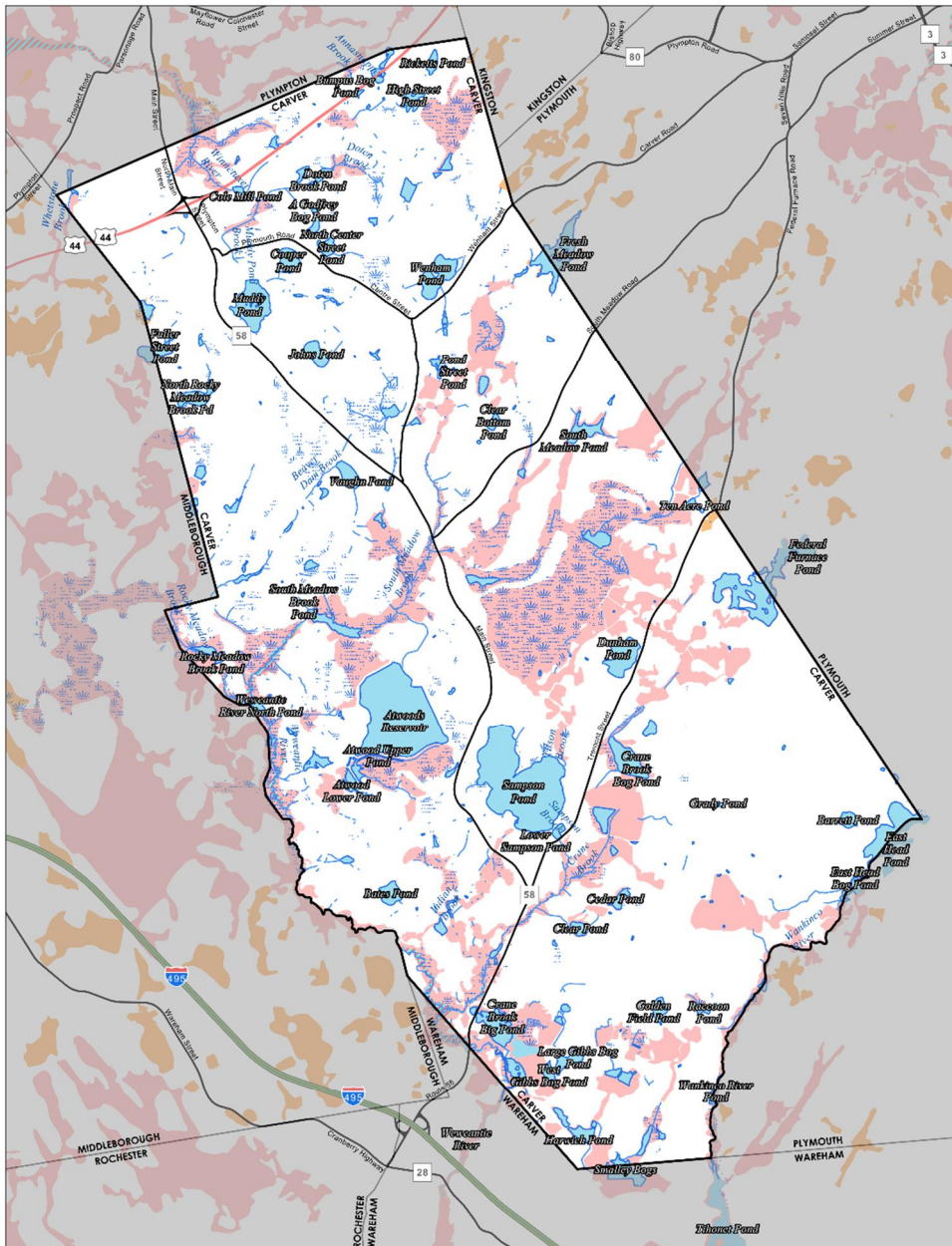
Appendix B - Maps and Companion Documentation

(Electronic map files available.)



Map 1A - Existing Water Resources

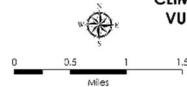




Map 1B - Flooding

Legend
MassDOT Major Roads
 Interstate
 U.S. Highway
 State Route
 Local Road
Hydrography
 Stream
 Reservoir
 Pond
 Lake
 Wetland
 Canyoning way

FEMA Flood Zone Designations
 AE (Special Flood Hazard Area)
 AE (Special Flood Hazard Area)
 AE (Special Flood Hazard Area)



**CLIMATE CHANGE WATER RESOURCE
 VULNERABILITY AND ADAPTATION
 STRATEGY ASSESSMENT**

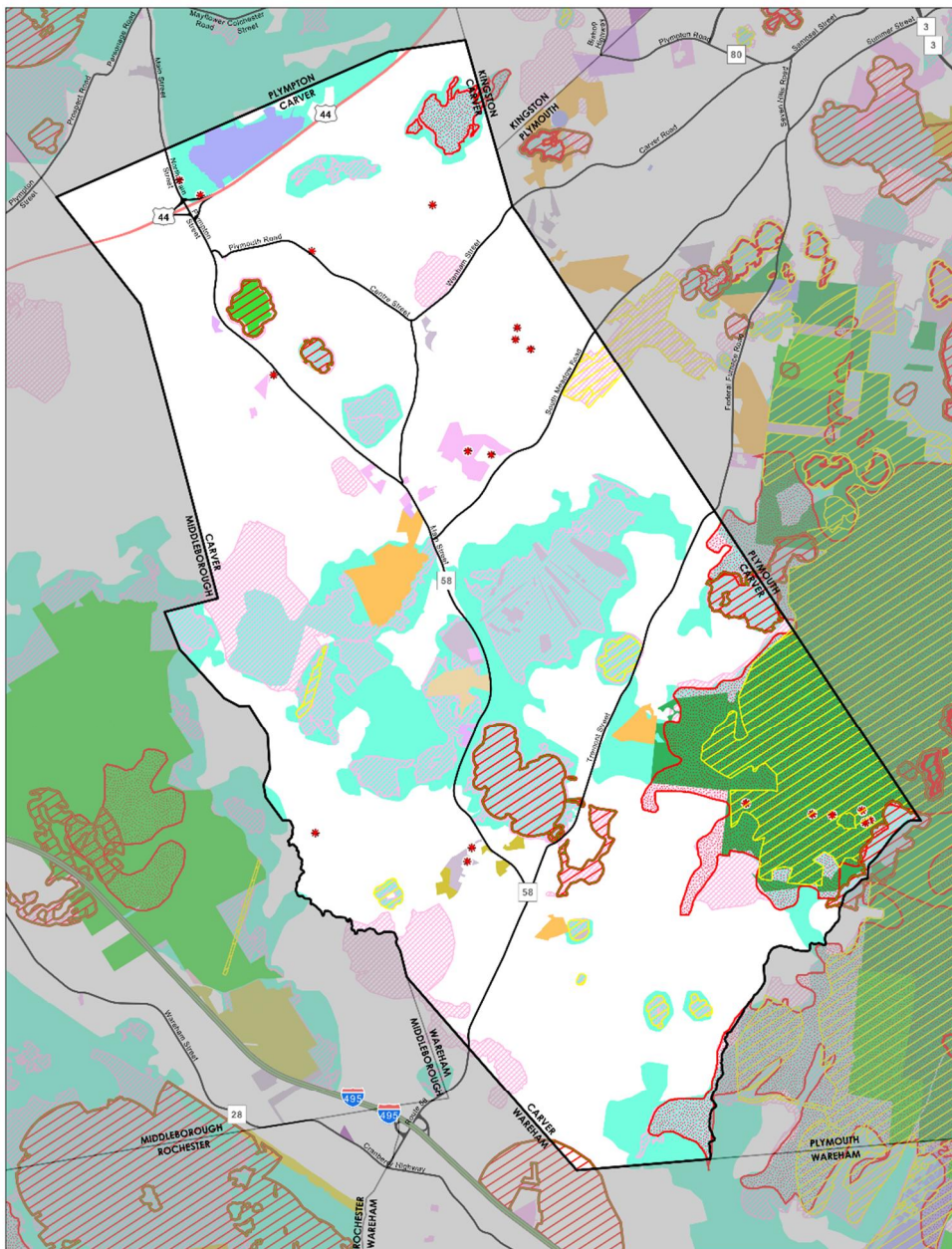
CARVER, MA



Document: C:\P2017\0390\B51 Carver\050\Carver 0 18 18.cpx

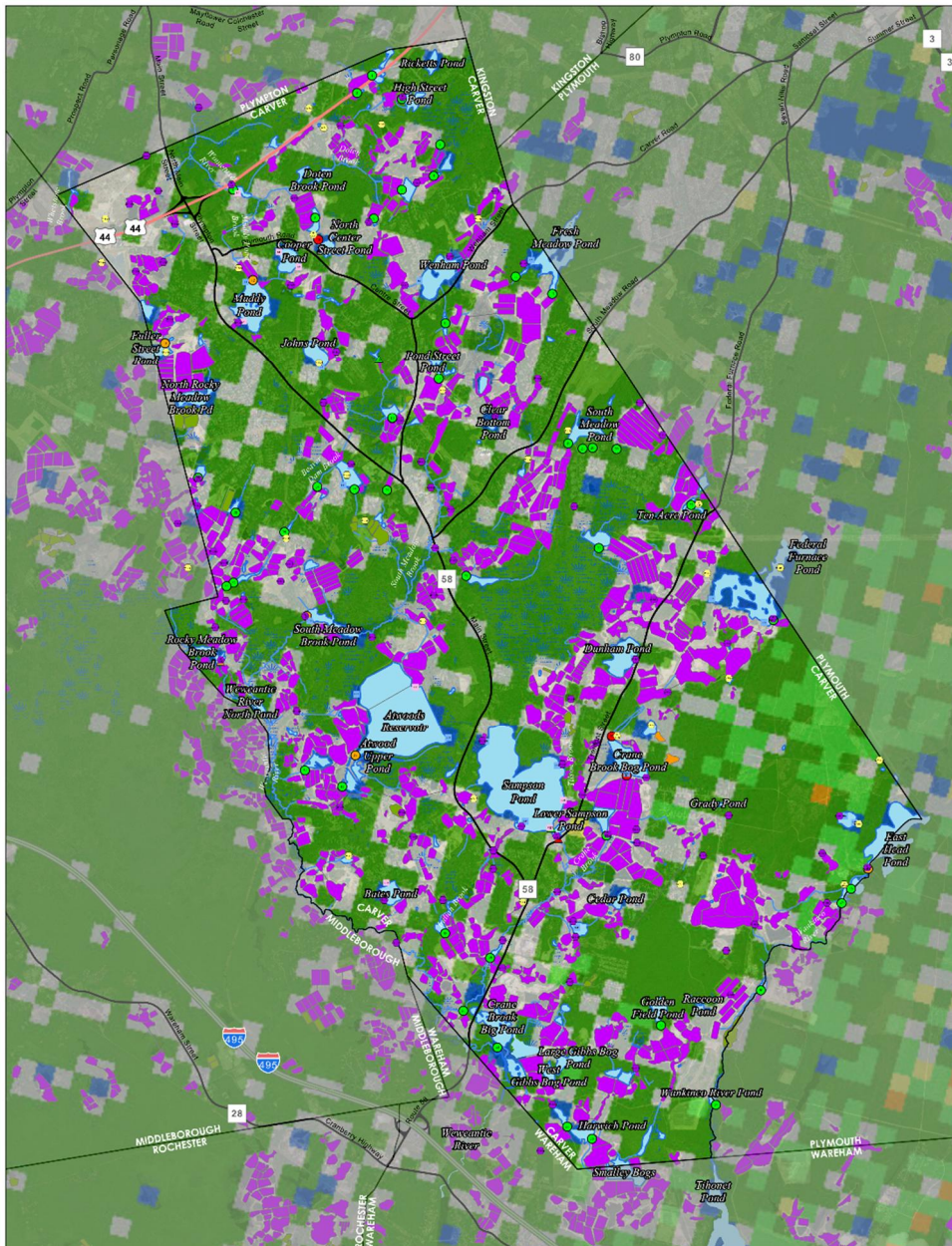
Revised: 12/15/2017





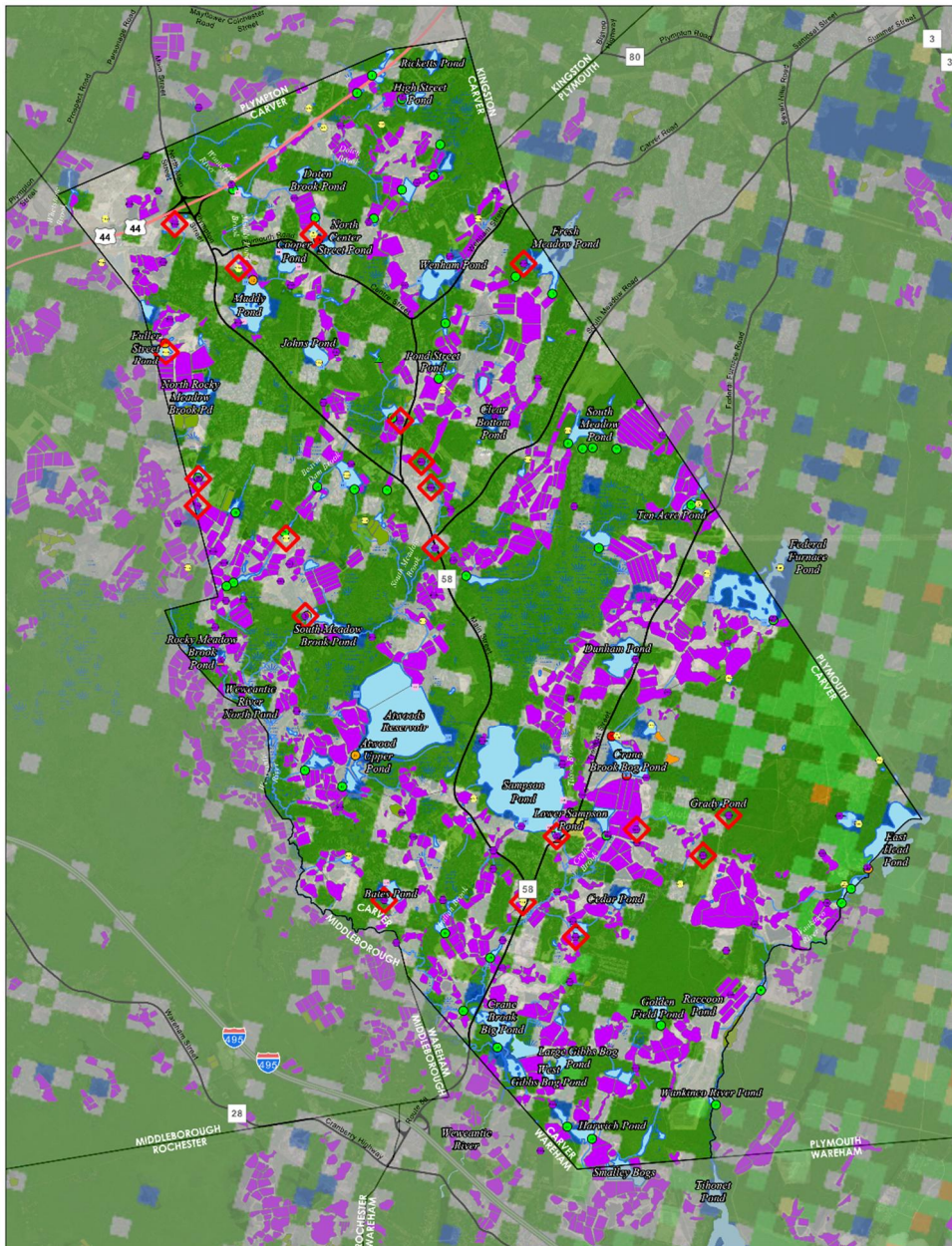
Map 2 - Existing Natural Resources





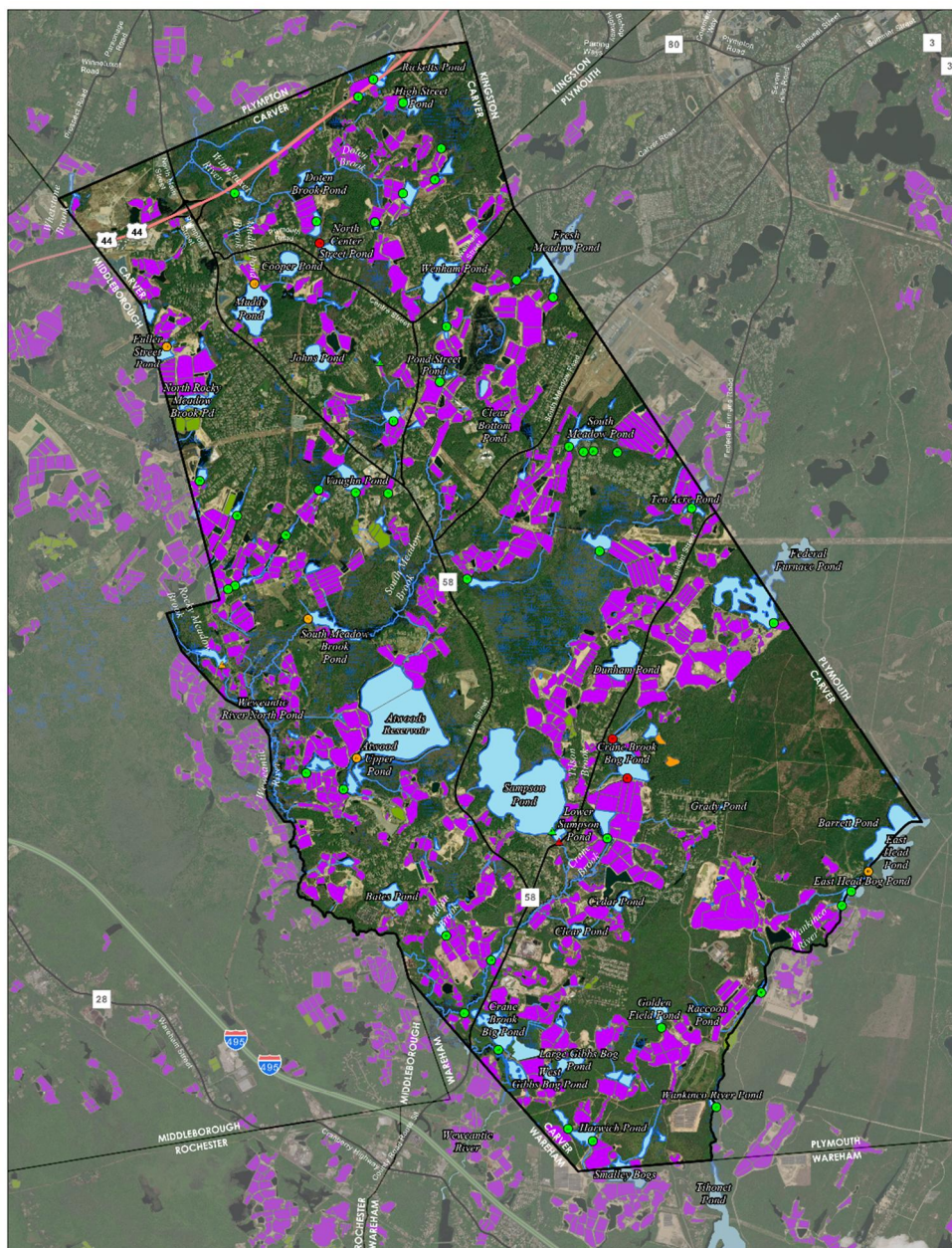
Map 3A - Firefighting Water Supplies





Map 3B - Priority Firefighting Water Supplies





Map 4 - Cranberry Growing Water Supplies



Mapping Data Sources

Map 1A - Existing Water Resources

Layer	Date	Source	Link
Town Boundaries	2017	MassGIS	https://docs.digital.mass.gov/dataset/massgis-data-community-boundaries-towns-survey-points
MassDOT Major Roads	2014	MassGIS	https://docs.digital.mass.gov/dataset/massgis-data-massachusetts-department-transportation-massdot-roads
MassDEP Wellhead Protection Areas	2018	MassGIS	https://docs.digital.mass.gov/dataset/massgis-data-massdep-wellhead-protection-areas-zone-ii-zone-i-wpa?_ga=2.1836850.268125362.1538744308-811132937.1538397091
Water Quality	2016	MassGIS	https://docs.digital.mass.gov/dataset/massgis-data-massdep-2014-integrated-list-waters-305b303d
WMA Cranberry Bogs	2018	MassDEP	By Request to Jim McLaughlin at MassDEP
MassDEP Hydrography	2017	MassGIS	https://docs.digital.mass.gov/dataset/massgis-data-massdep-hydrography-125000
Aquifers	2007	MassGIS	https://docs.digital.mass.gov/dataset/massgis-data-aquifers

Map 1B - Flooding

Layer	Date	Source	Link
Town Boundaries	2017	MassGIS	https://docs.digital.mass.gov/dataset/massgis-data-community-boundaries-towns-survey-points
MassDOT Major Roads	2014	MassGIS	https://docs.digital.mass.gov/dataset/massgis-data-massachusetts-department-transportation-massdot-roads
WMA Cranberry Bogs	2018	MassDEP	By Request to Jim McLaughlin at MassDEP
MassDEP Hydrography	2017	MassGIS	https://docs.digital.mass.gov/dataset/massgis-data-massdep-hydrography-125000
FEMA National Flood Hazard	2017	MassGIS	https://docs.digital.mass.gov/dataset/massgis-data-fema-national-flood-hazard-layer

Map 2 - Existing Natural Resources

Layer	Date	Source	Link
Town Boundaries	2017	MassGIS	https://docs.digital.mass.gov/dataset/massgis-data-community-boundaries-towns-survey-points
MassDOT Major Roads	2014	MassGIS	https://docs.digital.mass.gov/dataset/massgis-data-massachusetts-department-transportation-massdot-roads
NHESP Estimated Habitats of Rare Wildlife	2017	MassGIS	https://docs.digital.mass.gov/dataset/massgis-data-nhesp-estimated-habitats-rare-wildlife
NHESP Priority Habitats of Rare Species	2017	MassGIS	https://docs.digital.mass.gov/dataset/massgis-data-nhesp-priority-habitats-rare-species
NHESP Natural Communities	2016	MassGIS	https://docs.digital.mass.gov/dataset/massgis-data-nhesp-natural-communities
NHESP Certified Vernal Pools	2018	MassGIS	https://docs.digital.mass.gov/dataset/massgis-data-nhesp-certified-vernal-pools
Open Space	2018	MassGIS	https://docs.digital.mass.gov/dataset/massgis-data-protected-and-recreational-open-space?_ga=2.6442033.268125362.1538744308-811132937.1538397091
BioMap2	2011	MassGIS	https://docs.digital.mass.gov/dataset/massgis-data-biomap2

Map 3 - Firefighting Water Supplies

Layer	Date	Source	Link
Town Boundaries	2017	MassGIS	https://docs.digital.mass.gov/dataset/massgis-data-community-boundaries-towns-survey-points
MassDOT Major Roads	2014	MassGIS	https://docs.digital.mass.gov/dataset/massgis-data-massachusetts-department-transportation-massdot-roads
Fire Department Water Supplies	2009	Carver Fire Department ¹	Not available online
Dams	2012	MassGIS	https://docs.digital.mass.gov/dataset/massgis-data-dams
MassDEP Hydrography	2017	MassGIS	https://docs.digital.mass.gov/dataset/massgis-data-massdep-hydrography-125000
Wildfire Hazard Potential	2018	U.S. Forest Service ²	https://www.arcgis.com/home/item.html?id=f0cc504be142b59b16a7ef44669a3
Aerial Imagery	2018		https://services.arcgis.com/arcgis/rest/services/World_Imagery/MapServer

¹ Digitized from Carver Fire Department Water supply printed map. Identified priority water supplies as identified by Carver fire chief.

² Source: Esri, DigitalGlobe, GeoEye, Earthstar Geographics, CNES/Airbus DS, USDA, USGS, AeroGRID, IGN, and the GIS User Community

Map 4 - Cranberry Growing Water Supplies

Layer	Date	Source	Link
Town Boundaries	2017	MassGIS	https://docs.digital.mass.gov/dataset/massgis-data-community-boundaries-towns-survey-points
MassDOT Major Roads	2014	MassGIS	https://docs.digital.mass.gov/dataset/massgis-data-massachusetts-department-transportation-massdot-roads
Dams	2012	MassGIS	https://docs.digital.mass.gov/dataset/massgis-data-dams
WMA Cranberry Bogs	2018	MassDEP	By Request to Jim McLaughlin at MassDEP
MassDEP Hydrography	2017	MassGIS	https://docs.digital.mass.gov/dataset/massgis-data-massdep-hydrography-125000
Aerial Imagery	2018		https://services.arcgis.com/arcgis/rest/services/World_Imagery/MapServer

³ Source: Esri, DigitalGlobe, GeoEye, Earthstar Geographics, CNES/Airbus DS, USDA, USGS, AeroGRID, IGN, and the GIS User Community

Appendix C – ODS Database Information for Carver

Massachusetts Office of Dam Safety Database Carver, MA

Dam #	DAMNAME	NATID	Regulation Authority	Owner	TOWN	DAMLAT	DAMLONG	LOCSTATUS	HAZCODE
1	Bumpus #1 Dam	MA00328	Non-Jurisdictional - Other	Private	Carver	41.942923	-70.774879	Verified	N/A
2	Bumpus #2 Dam	MA02081	Non-Jurisdictional - Other	Private	Carver	41.940648	-70.777522	NOT Verified	N/A
3	Makepeace #1 Dam	MA00381	Non-Jurisdictional - Other	Private	Carver	41.939822	-70.769722	Verified	N/A
4	Makepeace #2 Dam	MA00332	Non-Jurisdictional - Other	Private	Carver	41.933822	-70.763147	Verified	N/A
5	Makepeace #3 Dam	MA02080	Non-Jurisdictional - Other	Private	Carver	41.929769	-70.764307	Verified	N/A
6	Cole Mill Pond Dam	MA00272	Non-Jurisdictional - Other	Private	Carver	41.928216	-70.799194	Verified	N/A
7	Makepeace #4 Dam	MA00331	Non-Jurisdictional - Other	Private	Carver	41.928008	-70.769879	Verified	N/A
8	A. Godfrey Dam #1	MA00382	Non-Jurisdictional - Other	Private	Carver	41.924457	-70.784982	Verified	N/A
9	Alberghini Dam	MA02083	Non-Jurisdictional - Other	Private	Carver	41.924299	-70.774797	Verified	N/A
10	Plymouth Road Dam	MA00401	Office of Dam Safety	Private	Carver	41.92161	-70.78446	Verified	Significant Hazard
11	Fresh Meadow Pond #2 Dam	MA02082	Non-Jurisdictional - Other	Private	Carver	41.916587	-70.750207	Verified	N/A
12	Muddy Pond Dam	MA00329	Office of Dam Safety	Private	Carver	41.916453	-70.795887	Verified	Low Hazard
13	Fresh Meadow Pond #1 Dam	MA00087	Non-Jurisdictional - Other	Private	Carver	41.91433	-70.743868	Verified	N/A
14	Sherman Pond Dam	MA02074	Non-Jurisdictional - Other	Private	Carver	41.910619	-70.76249	Verified	N/A
15	Fuller Street Dam	MA00090	Office of Dam Safety	Private	Carver	41.908334	-70.811253	Verified	Low Hazard
16	Diamond Bog Reservoir Dam	MA02087	Non-Jurisdictional - Other	Town of Carver	Carver	41.90597	-70.774136	NOT Verified	N/A
17	Pond Street Dam	MA00088	Non-Jurisdictional - Other	Private	Carver	41.90332	-70.763735	Verified	N/A
18	Old Center St. Dam	MA02073	Non-Jurisdictional - Other	Private	Carver	41.898291	-70.771872	NOT Verified	N/A
19	South Meadow Pond Dam	MA00380	Non-Jurisdictional - Other	Private	Carver	41.894765	-70.74134	Verified	N/A
20	Indian Brook Reservoir Dam	MA02093	Non-Jurisdictional - Other	Private	Carver	41.894185	-70.737103	Verified	N/A
21	Makepeace #5 Dam	MA02094	Non-Jurisdictional - Other	Private	Carver	41.894085	-70.738819	NOT Verified	N/A
22	Fuller-Hammond Dam #1	MA02092	Non-Jurisdictional - Other	Private	Carver	41.893976	-70.732921	NOT Verified	N/A
23	Town Line Dam	MA02072	Non-Jurisdictional - Other	Private	Carver	41.890748	-70.805695	Verified	N/A
24	John Atwood Pond Dam	MA02075	Non-Jurisdictional - Other	Private	Carver	41.889435	-70.784994	Verified	N/A
25	Vaughn Pond Dam	MA02089	Non-Jurisdictional - Other	Private	Carver	41.88906	-70.77856	Verified	N/A
26	Shurtleff Pond Dam	MA03148	Non-Jurisdictional - Other	Private	Carver	41.88892	-70.772906	Verified	N/A
27	10 Acre Reservoir Dam	MA01071	Non-Jurisdictional - Other	Private	Carver	41.886641	-70.720065	NOT Verified	N/A
28	Fosdick Road Dam	MA02076	Non-Jurisdictional - Other	Private	Carver	41.886188	-70.799237	Verified	N/A
29	Beaver Dam Road Pond	MA02067	Non-Jurisdictional - Other	Private	Carver	41.8836	-70.79078	Verified	N/A
30	Atwood Dam	MA02079	Non-Jurisdictional - Other	Private	Carver	41.88117	-70.736173	Verified	N/A
31	Shaw Bog Reservoir Dam	MA00089	Non-Jurisdictional - Other	Private	Carver	41.877739	-70.759271	Verified	N/A
32	Beaver Brook #1 Dam	MA02070	Non-Jurisdictional - Other	Private	Carver	41.877117	-70.799686	NOT Verified	N/A
33	Beaver Brook #2 Dam	MA02071	Non-Jurisdictional - Other	Private	Carver	41.876657	-70.800911	NOT Verified	N/A
34	Holmes Street Dam	MA00379	Office of Dam Safety	Private	Carver	41.872713	-70.787017	Verified	Low Hazard
35	Federal Pond Dam	MA00268	Non-Jurisdictional - Other	Private	Carver	41.871655	-70.705975	Verified	N/A
36	France Street Dam	MA00084	Office of Dam Safety	Town of Carver	Carver	41.866905	-70.80206	Verified	Low Hazard
37	Mayflower Road Dam	MA00267	Office of Dam Safety	Private	Carver	41.856652	-70.734216	Verified	Significant Hazard
38	Atwood Upper Reservoir #2 Dam	MA00083	Office of Dam Safety	Private	Carver	41.854468	-70.778776	NOT Verified	Low Hazard
39	Atwood Dam #3	MA02084	Non-Jurisdictional - Other	Private	Carver	41.852579	-70.787565	Verified	N/A
40	Crane Brook Upper Dam	MA02069	Office of Dam Safety	Private	Carver	41.851538	-70.731702	Verified	Significant Hazard
41	Atwood Lower Reservoir #1 Dam	MA00378	Non-Jurisdictional - Other	Private	Carver	41.850409	-70.781116	NOT Verified	N/A
42	Sampson Pond Dam	MA00380	Non-Jurisdictional - Other	Town of Carver	Carver	41.844782	-70.744849	Verified	N/A
43	Crane Brook Lower Dam	MA02068	Non-Jurisdictional - Other	Private	Carver	41.843738	-70.735293	NOT Verified	N/A
44	Tremont Street Dam	MA00377	Office of Dam Safety	Town of Carver	Carver	41.843386	-70.743671	Verified	Significant Hazard
45	East Head Pond Dam	MA00376	Office of Dam Safety	Private	Carver	41.839131	-70.689914	Verified	Low Hazard
46	East Head Bog Dam #1	MA00269	Non-Jurisdictional - Other	Private	Carver	41.836534	-70.692912	Verified	N/A
47	East Head Bog Dam #2	MA00330	Non-Jurisdictional - Other	Private	Carver	41.834688	-70.69456	Verified	N/A
48	Bartholomew Pond Dam	MA02086	Non-Jurisdictional - Other	Private	Carver	41.83123	-70.763461	Verified	N/A
49	Crane Brook Dam	MA02078	Non-Jurisdictional - Other	Private	Carver	41.828016	-70.755674	Verified	N/A
50	Wankinco River #1 Dam	MA00270	Non-Jurisdictional - Other	Private	Carver	41.823495	-70.708747	Verified	N/A
51	Slocum-Gibbs #2 Dam	MA02077	Non-Jurisdictional - Other	Private	Carver	41.821149	-70.760421	Verified	N/A
52	Golden Field Pond Dam	MA00271	Non-Jurisdictional - Other	Private	Carver	41.81906	-70.72615	Verified	N/A
53	Slocum-Gibbs #1 Dam	MA00086	Non-Jurisdictional - Other	Private	Carver	41.816362	-70.754559	Verified	N/A
54	Wankinco River #2 Dam	MA00333	Non-Jurisdictional - Other	Private	Carver	41.808543	-70.716728	Verified	N/A
55	Harwich Upper Reservoir Dam	MA00402	Non-Jurisdictional - Other	Private	Carver	41.805884	-70.742551	Verified	N/A
56	Harwich Lower Reservoir Dam	MA00403	Non-Jurisdictional - Other	Private	Carver	41.80428	-70.738272	Verified	N/A