

**RESIDENCES AT EDAVILLE
PROJECT TEAM**

Developer:
Residences at Edaville
Jon Delli Priscoli and Brenda Johnson

Architect:
Gorman Richardson Lewis Architects (GRLA)

Civil Engineer:
Arthur F. Borden & Associates, Inc.

Environmental Consultant:
Goddard Consulting, LLC

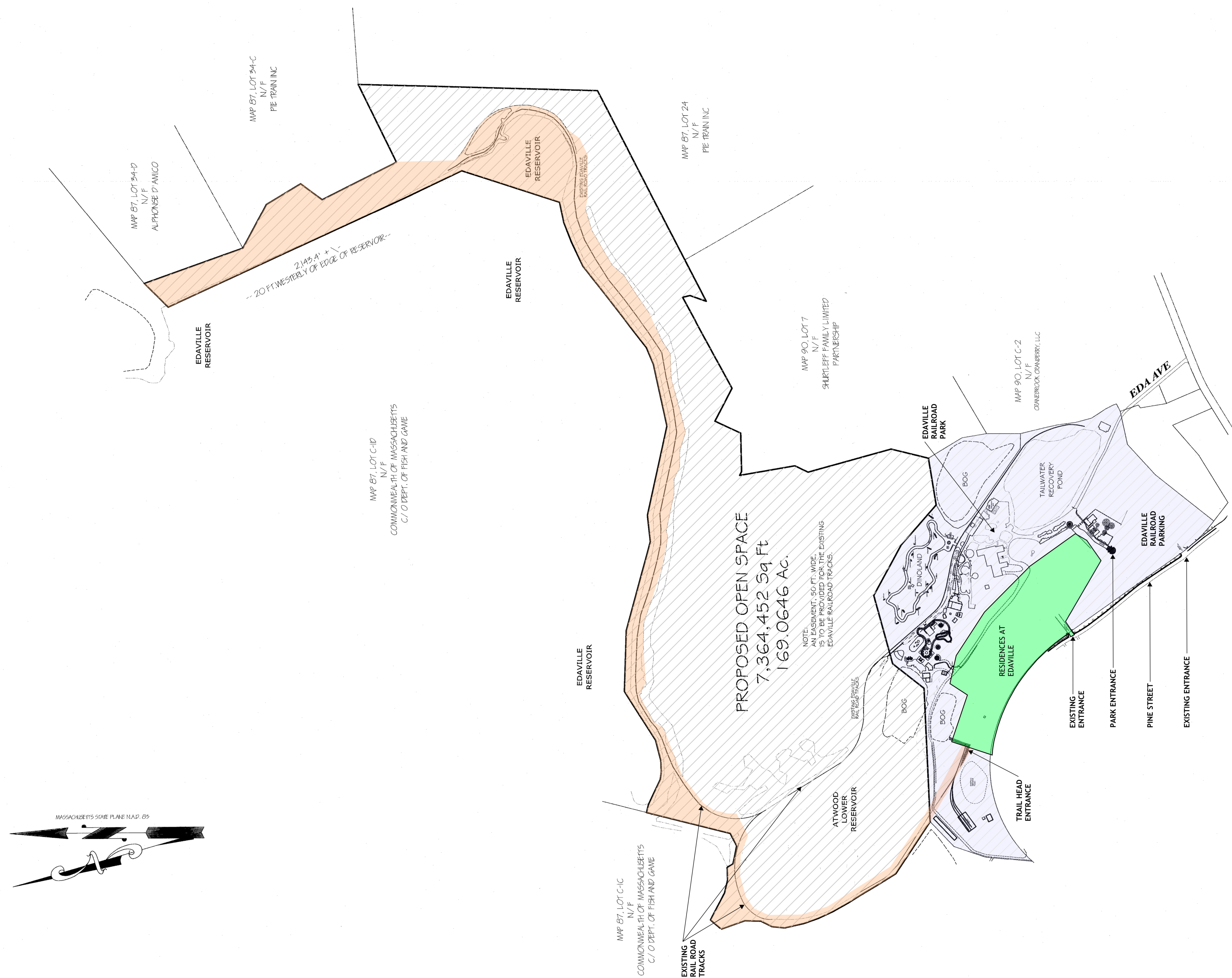
Traffic Consultant:
MDM Traffic Consultants

40B Consultant:
LDS Consulting Group

Wastewater Consultant:
Onsite Engineering, Inc.

Construction Manager:
R.P. Masiello



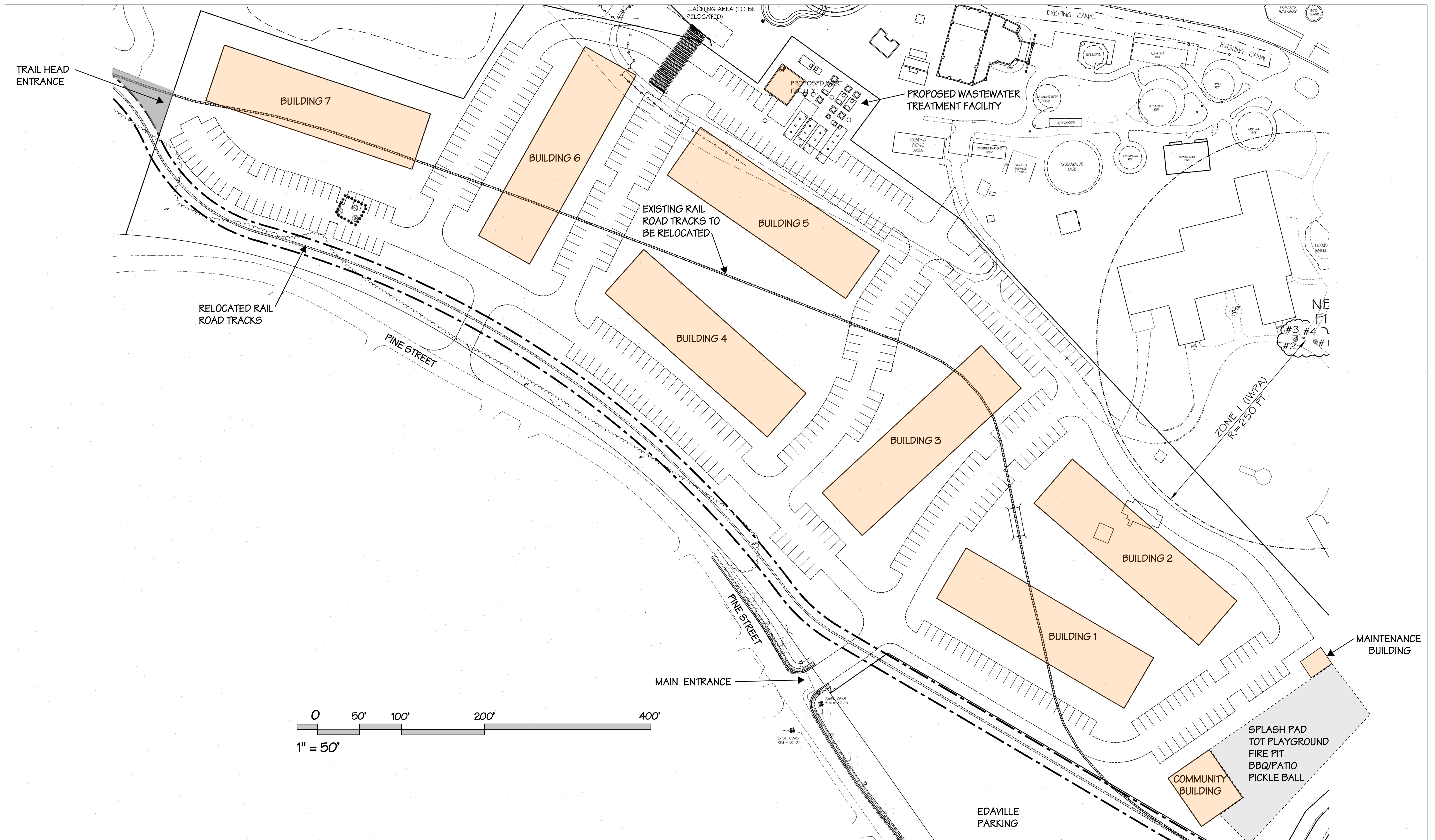


PROPOSED OPEN SPACE
AT
EDAVILLE FAMILY THEME PARK
CARVER, MASSACHUSETTS

JUNE 22, 2022

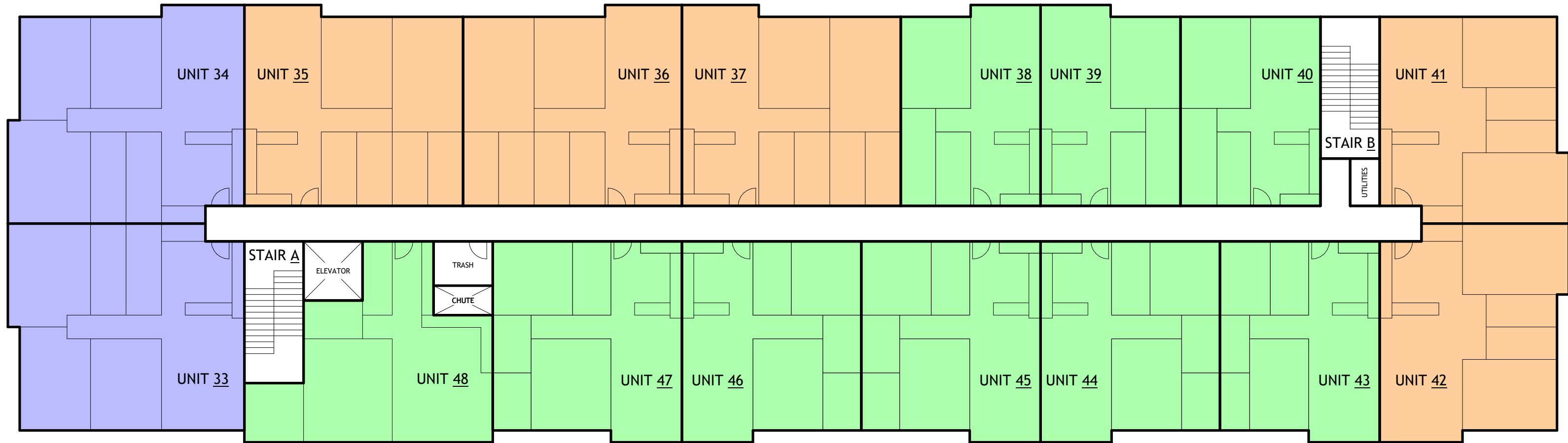
SCALE 1" = 300 FT.

B Arthur F. Borden & Associates, Inc.
Professional Land Surveyors & Civil Engineers
302 Broadway - Unit #4 - Raymham, Massachusetts 02767
(508) 660-3439 - WWW.AFBORDEN.COM

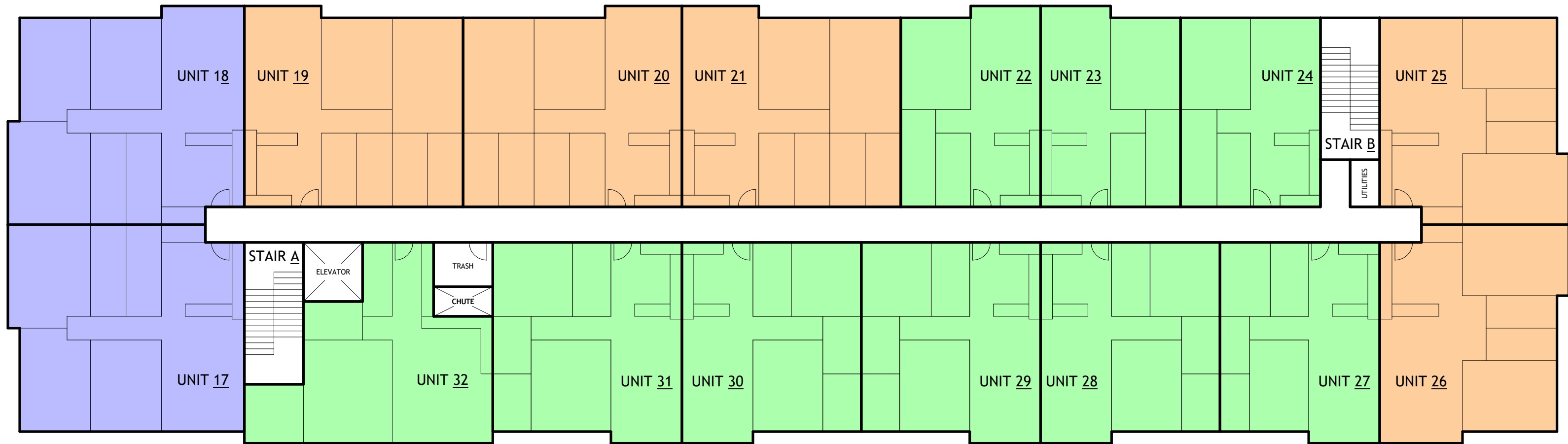




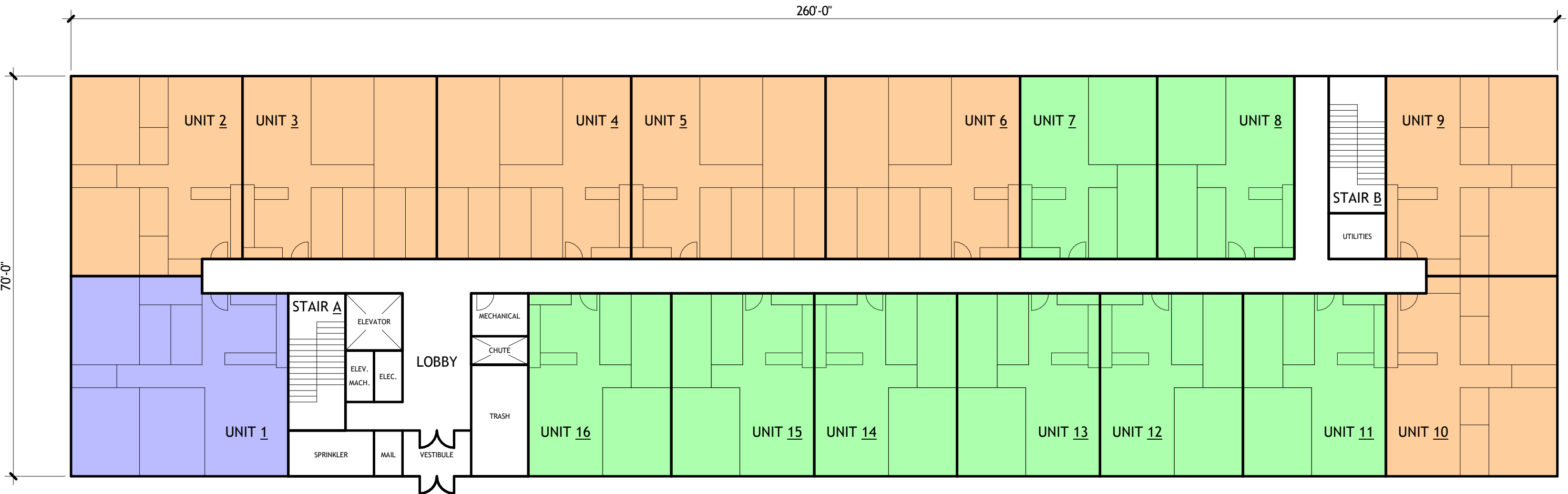
THIRD FLOOR PLAN



SECOND FLOOR PLAN



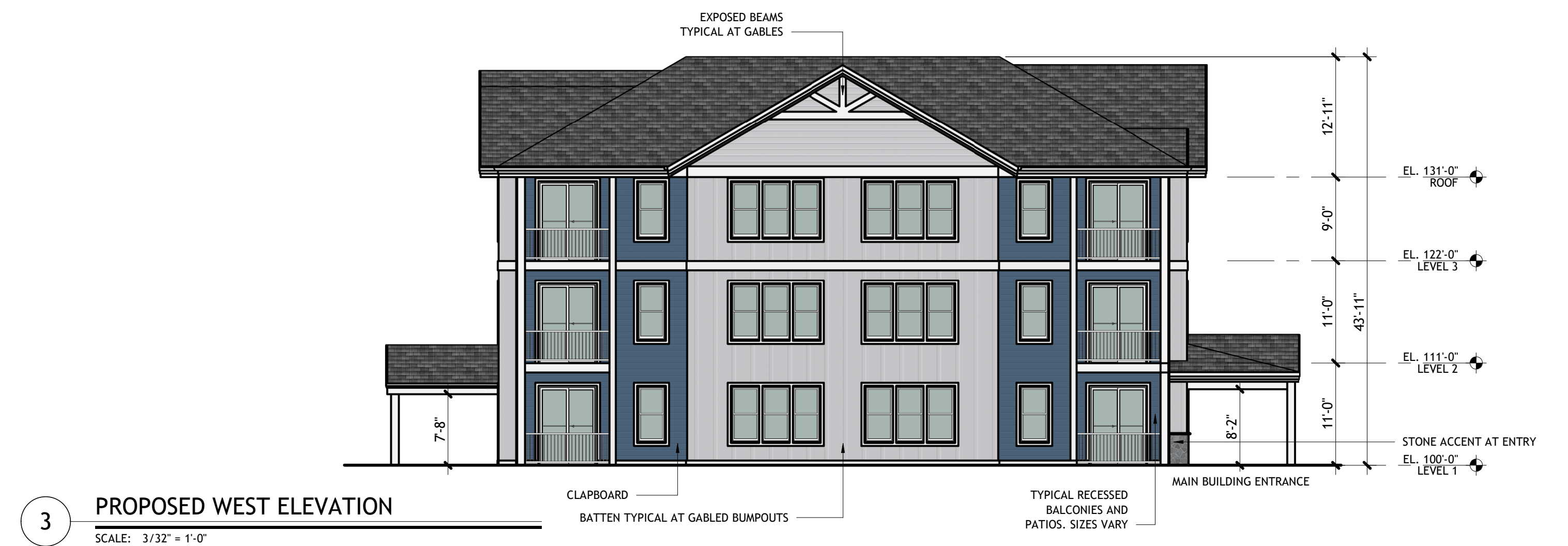
FIRST FLOOR PLAN



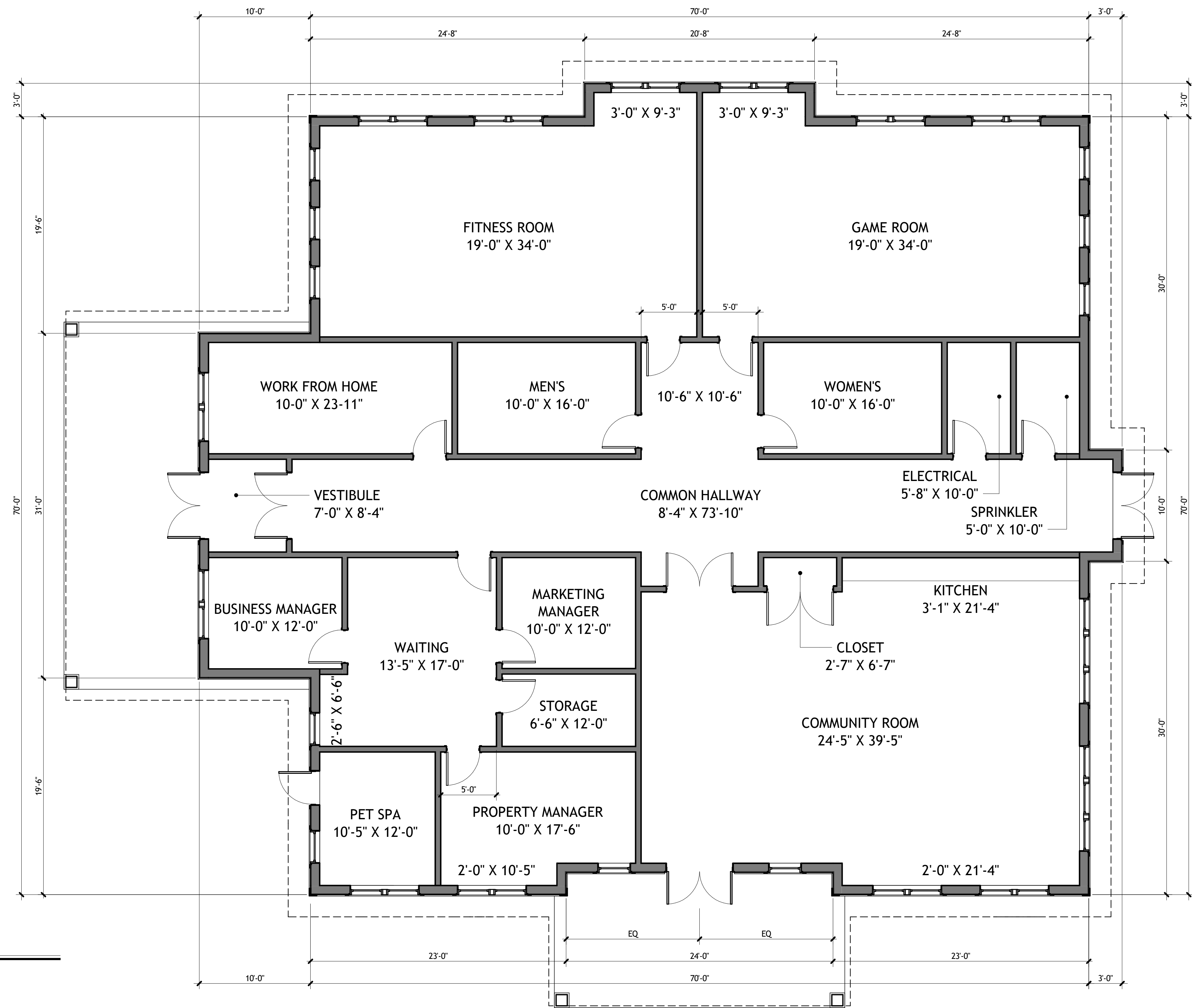
- ONE BEDROOM UNIT
- TWO BEDROOM UNIT
- THREE BEDROOM UNIT
- COMMON BUILDING

UNIT TYPE SUMMARY			
UNIT TYPE	TOTAL UNITS / BUILDING	TOTAL UNITS ON SITE	% OF UNITS TOTAL
ONE	26	182	55%
TWO	17	119	35%
THREE	05	35	10%
TOTAL	48	336	100%



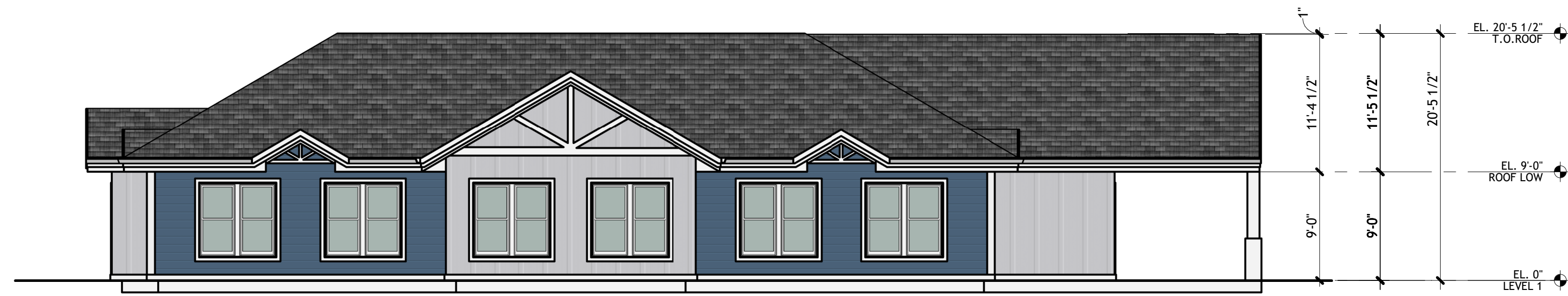




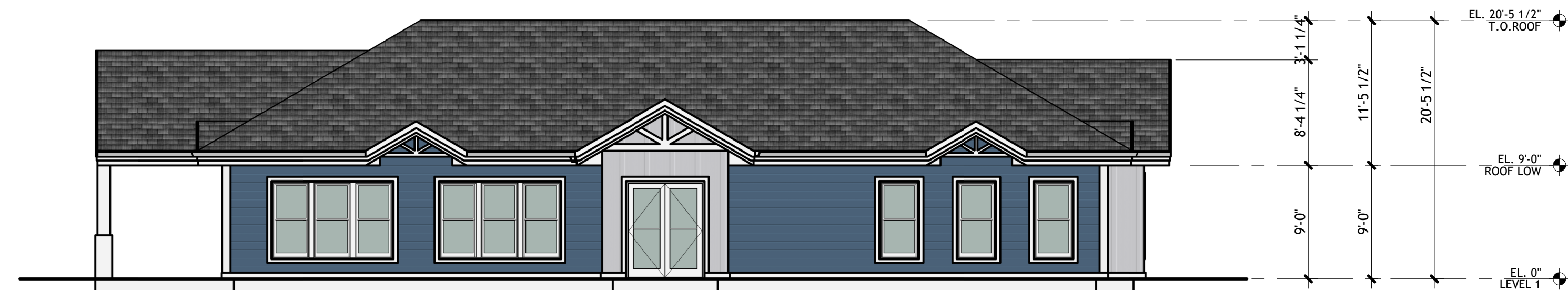


1 PROPOSED FLOOR PLAN
SCALE: 3/16" = 1'-0"

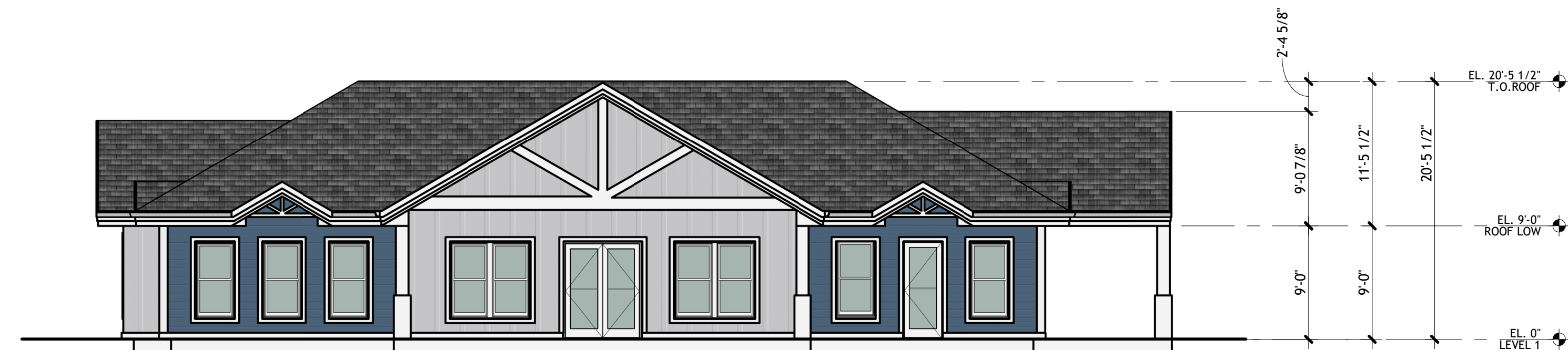
4 PROPOSED NORTH ELEVATION
SCALE: 1/8" = 1'-0"



3 PROPOSED EAST ELEVATION
SCALE: 1/8" = 1'-0"



2 PROPOSED WEST ELEVATION
SCALE: 1/8" = 1'-0"



1 PROPOSED SOUTH ELEVATION
SCALE: 1/8" = 1'-0"

